



INSTITUTUL DE ARHEOLOGIE „VASILE PÂRVAN”

MATERIALE ȘI CERCETĂRI ARHEOLOGICE
SERIE NOUĂ, SUPPLEMENTUM III

IN MEMORIAM
EUGEN NICOLAE

EDITAT DE
ROXANA DOBRESU, AUREL VÎLCU

BUCUREȘTI
2025

COPERTA: Dan Iulian MĂRGĂRIT

**MCA SERIE NOUĂ
SUPPLEMENTUM III**

www.mcajournal.ro

**Tehnoredactor: Ofelia COȘMAN
Secretar de redacție: Dana COSTIN**

Descrierea CIP a Bibliotecii Naționale a României

In memoriam Eugen Nicolae / ed.: Roxana Dobrescu, Aurel Vîlcu -

Târgoviște: Cetatea de scaun, 2025

Conține bibliografie

ISBN 978-606-537-820-9

I. Dobrescu, Roxana (ed.)

II. Vîlcu, Aurel (ed.)

902

929

**Toate articolele publicate în *Materiale și Cercetări Arheologice* sunt *peer-reviewed*.
Materiale și Cercetări Arheologice este indexată în următoarele baze de date:
Persée, Copernicus, ERIH PLUS, Scopus, CEEOL, EBSCO și DOAJ.**

Acest volum a fost editat cu sprijinul financiar al Institutului de Arheologie „Vasile Pârvan”.



(1955–2024)

SUMAR / SOMMAIRE / CONTENTS

Aurel VÎLCU <i>In memoriam</i> Eugen Nicolae.....	9
Georges DEPEYROT Eugen Nicolae et cinq siècles de numismatique Eugen Nicolae and five centuries of numismatics	31
Adina BORONEANȚ, Monica MĂRGĂRIT One man’s trash is another man’s treasure – the case of the osseous debitage waste from Drăgușeni – <i>Ostrov</i>	39
David BACIU, Adrian BĂLĂȘESCU Preliminary study of the faunal material discovered in an Early Eneolithic feature from Alexandria – <i>Limonagiul</i> settlement (Teleorman County). 2019–2021 campaigns.....	59
Radu BĂJENARU Poveste din trecut. Despre descoperirea depozitului de topoare de la Sinaia A tale from the past. The discovery of the Sinaia axe-hoard	83
Gabriel Mircea TALMAȚCHI Două tezaure de semne monetare descoperite în zona de coastă a Mării Negre din teritoriul istro-pontic Two hoards of monetary signs discovered in the Black Sea coastal area of the Istro-Pontic area.....	99
Pierre DUPONT Transport amphoras of “Milesian” type: originals and local imitations.....	111
Theodor ISVORANU Monede din perioada romană imperială descoperite în zona Orheiului (Republica Moldova) Roman imperial coins from the Orhei area (Republic of Moldova)	119
Lucian MUNTEANU, Lăcrămioara-Elena ISTINA Noi informații despre tezaurul monetar roman imperial de la Măgirești (jud. Bacău) (CHRE 16297) New information on the Roman imperial monetary hoard from Măgirești (Bacău County) (CHRE 16297)	139
Mihai DIMA Monede romane dintr-o colecție constituită la Ostrov, jud. Constanța A collection of Roman coins found at Ostrov, Constanța County.....	159
Constantin C. PETOLESCU <i>Cohors II Dacorum</i> . Două trupe auxiliare romane cu număr de ordine identic <i>Cohors II Dacorum</i> . Two Roman auxiliary troops with identical numerical identifiers	173
Radu ARDEVAN, Alin PRALEA Monete antice din colecția lui Ioan Mihályi de Apșa Ancient coins from the collection of Ioan Mihályi de Apșa	177
Mircea DABÎCA, Theodor ISVORANU Cercetări arheologice la Histria, sectorul Sud (2018–2024). Descoperiri monetare Archaeological research at Histria, the South sector (2018–2024). Coin finds.....	189
Adriana PANAITE Roman roads in Moesia Inferior in the Black Sea coast area	213
Marius BLASKÓ, Zsuzsanna KOPECZNY, Róbert GINDELE, Gergely SZENTHE, Ștefan POPA, Erwin GÁLL Dating grave no. 97 from Vălcani in the light of numismatic and radiocarbon research – contributions to the chronology of H.1.....	237

Aurel-Daniel STĂNICĂ	
Între bizantini și tătari. Cimitirul de la Isaccea – <i>Bagola</i>	
Between Byzantines and Tatars. The necropolis from Isaccea – <i>Bagola</i>	249
Oana DAMIAN	
Despre prezența Hoardei de Aur în situl bizantin de la Nufăru (județul Tulcea)	
The Golden Horde and the Byzantine archaeological site at Nufăru (Tulcea County)	295
Ana BOLDUREANU	
Un fragment din tezaurul de monede tătărești descoperit la Inești, Raionul Telenești, Republica Moldova	
A fragment of the Tatar coin hoard discovered in Inești, Telenești district, Republic of Moldova.....	303
Monica DEJAN, Ana BOLDUREANU	
Considerații despre câteva monede tătărești descoperite în zona Cetății de Scaun a Sucevei	
(a doua jumătate a secolului XIV)	
Considerations about a few Tatar coins discovered in the Suceava Fortress area	
(second half of the 14 th century).....	313
Letiția NISTOR, Adrian BĂTRÎNA	
Vestigiile bisericii lui Alexandru cel Bun de la Mănăstirea Bistrița (județul Neamț). Propuneri de reconstituire	
arhitecturală	
The remains of the Bistrița monastery (Neamț County) founded by Alexander the Good. Proposals for	
architectural reconstructions.....	319
Lilia DERGACIOVA, Alexandr ALEXANDROV	
Matrița sigilară a unui demnitar din sfatul domnesc al lui Ștefan II, domnitorul Țării de Jos a Moldovei	
The seal of a dignitary member in the Princely Council of Stephen II, Prince of Lower Moldova	337
Ioan-Aurel POP, Alexandru SIMON	
Bani pentru cruciadă: Rapoarte sieneze din primăvara anului 1476	
Money for the Crusade: Sieneze Reports from Spring 1476.....	341
Alexandru SIMON	
Documente și monede: <i>Petrusian</i> și lancu de Hunedoara	
Documents and coins: <i>Petrusian</i> and John Hunyadi	349
Gabriel CUSTUREA, Ana-Maria VELTER	
Câteva monede rare din colecția muzeului constănțean	
A few rare coins in the collection of the Constanța Museum	357
Florin Gabriel PETRICĂ, Minodora CÂRCIUMARU, Ovidiu CÎRSTINA, Adrian IONIȚĂ	
Observații asupra a două morminte descoperite în necropola bisericii „Sfânta Vineri” de la	
Curtea Domnească din Târgoviște	
Remarks on two burials in the cemetery of the Sfânta Vineri church from the Royal Court of Târgoviște.....	363
Gabriel VASILE	
Despre un posibil ritual funerar la populațiile medievale din Muntenia prin prisma a doi indivizi descoperiți	
în cimitirul bisericii „Sf. Vineri” de la Curtea Domnească din Târgoviște	
On a possible funerary ritual of Medieval populations in Wallachia as indicated by two individuals buried	
in the cemetery of the Sfânta Vineri church from the Royal Court of Târgoviște	373
Adriana GAȘPAR	
Șoapte din trecut. Fragmente ceramice cu inscripții în limba osmană descoperite la Timișoara	
Whispers from the past. Pottery sherds with Osmanic language inscriptions from Timișoara	391
Daniela MARCU-ISTRATE, Cristian-Florin ANGHELESCU, Roxana BUGOI	
Introducere în studiul sticlei de fereastră descoperite la Catedrala Romano-Catolică și Palatul Episcopal	
din Alba Iulia	
An introduction to the study of the window glass from the Roman-Catholic Cathedral and the Bishop’s Palace	
in Alba-Iulia.....	409

Radu Gabriel DUMITRESCU	
Un nou lot din tezaurul de la Craiova – <i>Strada Nicolae Bălcescu</i> (Sec. XVII–XVIII)	
A new part of the Craiova hoard – <i>Nicolae Bălcescu Street</i> (17 th –18 th centuries).....	433
Mariana ŞLAPAC	
The contribution of the ottomans to the construction of the Vauban-type fortress in Kiliya.....	449
Corneliu Bogdan Nicolae BELDIANU, Camelia Silvia BELDIANU	
<i>Tsuba</i> cu scene evocatoare. O formă de manifestare a unei arte medalistice avant la lettre în Japonia perioadei Edo?	
<i>Tsuba</i> with evocative scenes. An avant la lettre manifestation form of medal art in Japan	463
Abrevieri / Abbreviations / Abbreviations	481

TRANSPORT AMPHORAS OF “MILESIAN” TYPE: ORIGINALS AND LOCAL IMITATIONS

Eugen NICOLAE
In memoriam

Pierre DUPONT

ArAr Lab, Lyon, e-mail: pierre.dupont15@orange.fr

Keywords: *East-Greek transport amphoras, “Milesian” type, Archaic period, Classical period, determination of origin, lab results*

Abstract: *Judging from lab results, the attribution of origin of the lineage of transport amphoras of “Milesian” type clearly points to the supremacy of Miletus in comparison with Samos and seems not at all restricted to the alternative between Samos and Miletus, several more or less distant secondary imitating centres have also been recorded.*

Cuvinte-cheie: *amfore de transport est-grecești, tip „milesian”, epoca arhaică, epoca clasică, determinarea originii, rezultate de laborator*

Rezumat: *Pe baza rezultatelor analizelor de laborator, atribuirea originii liniei evolutive de amfore de transport de tip „milesian” indică în mod clar supremația Miletului în raport cu Samos și nu pare deloc limitată la alternativa dintre cele două centre, fiind identificate mai multe centre secundare de producție, mai mult sau mai puțin îndepărtate, care au reprodus modelul „milesian”.*

The database of the Lyon Lab of archaeometry includes some 156 amphorae samples from Miletus, mainly of the Archaic period but covering a much larger chronological range. Among them, seven fragments of transport amphoras are representative of the locally made, standard shape type of the Archaic period (Fig. 1). This is characterized by a high, more or less flaring convex lip, usually supported by one or several ridges overhanging each other around the top of the more or less flaring neck, itself set off from the shoulder, either by a gorge or by a vertical folding. Either oval in section or double-reeded, the handles arch more or less obliquely down to the shoulder. As for the ovoid belly, it rests on a low ring-foot, flaring out and sharply bevelled at the base. Generally micaceous and orange at the core, the beige clay of the exported specimens does not receive either slip or banded decoration. Instead of wine, the lineage of these Milesian containers was mainly intended to carry olive oil, a staple largely produced across the whole of Caria, as well as by the *ἐλαιόφυτος* Samos Island (P.Cair.Zen. I 59015γ). Of course, some morphological variants are also recorded, which have revealed a distinct chemical pattern. It is the case of one of our samples, similar to another find from Salamis-on-Cyprus and seemingly of Propontis manufacture (Daskyleion area?) (Fig. 2).

As early as the very beginning of the Classical period, this lineage of containers of Milesian type adopted much slenderer proportions, as well as a wider variety of mouth profiles, while the former ring-foot was replaced by a more or less bulging, hollowed toe (Fig. 3), possibly connected with an enlargement of the production area across South Ionia.

For that reason, considering the wide distribution of this lineage of Milesian-type containers across the Black Sea area, it occurred to me that it would be necessary to test the homogeneity of the manufacturing of this evolutive lineage of containers, either concentrated in a single centre or shared with other ones.

The situation expressed by the dendrogram of chemical patterns (Pl. I) gathering both standard archaic Milesian jars with ovoid body and high convex lip, and classical spindle-shaped ones (either with high convex lip or rolled rim), points to a rather contrasting partition: whereas most former ones are concentrated within a wide homogenous cluster, gathering both our samples from Miletus itself and those collected from the Pontic settlements, the spindle-shaped varieties conversely appear scattered among several distinct marginal clusters. If several isolated specimens, either with high convex or rolled lip, still appear high up among our Milesian main cluster (Fig. 3), some others fall into a separate cluster ascribable to the Samos Island (Fig. 5), thus confirming the predominantly South Ionian origin of the lineage. As for the latter, scattered among several mini-clusters, their attribution of origin appears at first unclear at the present stage: are they still to be interpreted as nearby South-Ionian products (present-day Akköy area?) with deviant chemical patterns (Fig. 4) or should they be ascribed to other, more distant geographical areas? (Figs. 6–10).

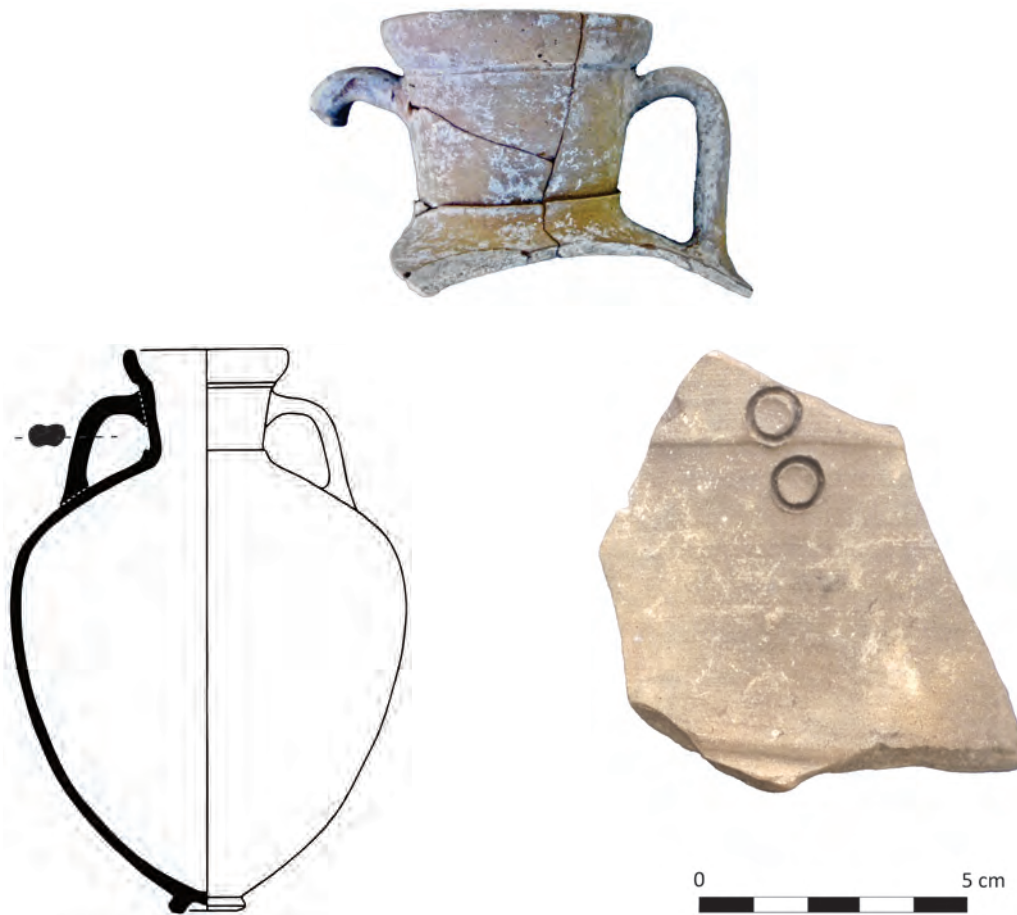


Figure 1. Archaic transport amphoras of "Milesian" type: Milesian manufacture.

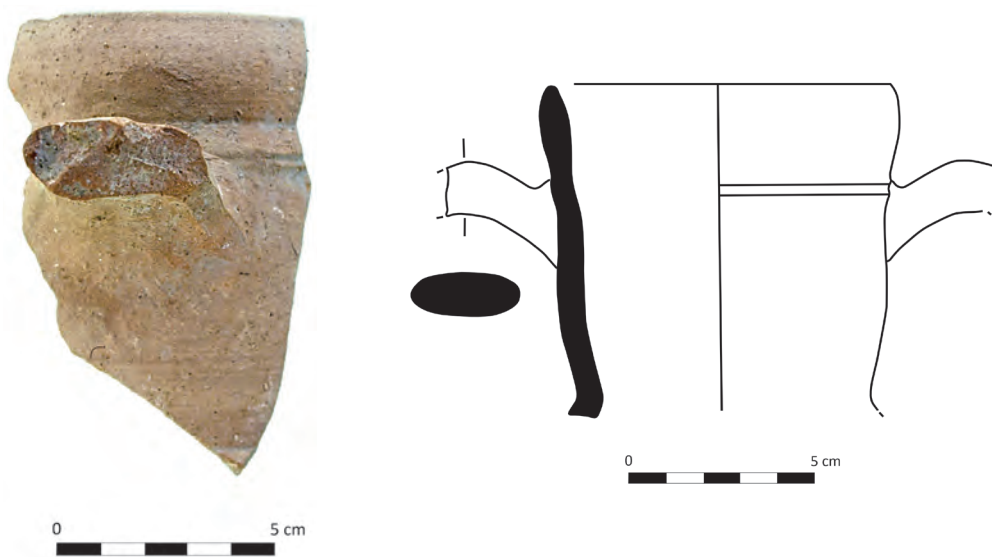


Figure 2. Archaic transport amphora of "Milesian" type: Propontis manufacture (Daskyleion area: Cyzicus?).



Figure 3. Classical transport amphoras of "Milesian" type: Milesian manufacture.

Incidentally, the fact that the Archaic stage of the lineage, surely intended for the transport of Carian olive oil, doesn't seem to have been imitated outside the Miletus territory, except for some isolated specimens of a deviant variant (Fig. 2), confirms the predominant position of Miletus across the South-Ionian hinterland, as well as among the Pontic settlements. Conversely, the occurrence, as soon as the beginning of the Classical period, of the spindle-shaped Classical stage of the lineage, immediately led to the appearance of various imitations, first of all by Samian workshops but also by various additional ones. Whether or not a sign of the declining position of Miletus following the Persian conquest, all these new spindle-shaped specimens were distributed under two rim profiles: either the original one with the high convex lip or a more common one with a rolled rim. The fact that the two variants were represented among the specimens of the Milesian manufacture suggests that they were probably used differentiating between oil and wine content, since the Milesian territory was not notably renowned for wine production. Conversely, outside Miletus, the question still stands.

Of course, our selection of samples, although not fully representative yet of the real situation provides a general idea of the complexity of this lineage of "Milesian" containers, obviously under the *aegis* of Miletus during the Archaic period. But soon after the beginning of the Classical period, the parallel development in both Miletus and Samos of the



Figure 4. Classical transport amphoras of "Milesian" type: Milesian hinterland manufacture.



Figure 5. Classical transport amphoras of "Milesian" type: Samian manufacture.

spindle-shaped models – of the same capacity (18 choes) – led to confusion, not only between these two South-Ionian lineages, but also through the development of additional imitations from several other centres of manufacture. Even if these additional attributions do not form really valid clusters within our dendrogram, preliminary individual comparisons of their chemical patterns with those of our East-Greek references would rather point, at first to the Miletus hinterland (Fig. 4), then to the fringes of Central Ionia (Ephesus and Colophon-Notion) (Fig. 6) and North-Ionia (Erythrae and Chios) (Figs. 7–8), but mostly, even further north, through the Hellespontus-Propontis straits (Fig. 9) which were both olive- and wine-growing areas, *i.e.* all along the major sea-route leading to the Black Sea, the allegedly "Milesian Lake" *par excellence* (Abydos, Lampsacus, Parion, Cyzicus *et alii*). Obviously, the case of the Troad-Propontis area would surely be the most interesting to investigate further: devoted both to wine (Lampsacus *et alii*) and olive growing (first of all along its southern coast), for which quite a lot of suitable containers were required, the area would have been best



Figure 6. Classical transport amphora of “Milesian” type: Ephesian manufacture?

suiting for appropriating the Milesian design of transport amphoras. It would surely be instructive to identify the place of manufacture of representative regional finds: first of all, those from the Milesian settlements, but also those brought to light at more anonymous ones, such as those from the Menekşe Çatağı settlement (NW Propontis) bearing the stamp ΣΤΟΛ. Even the western shores of the Black Sea would need more inquiries, first of all the already wine-producing hinterland of the Burgas Gulf, between Apollonia and Mesambria, which may well have adopted transport containers modelled on the one of their respective mother-cities, viz. Miletus for Apollonia. Presumably, more imitations are most probably to be expected, as well as originals, both south of Miletus, along the Carian coast, and even westwards along the North-Aegean coast (according to the range of finds from Akanthos, Oisyme, Dikaia and Thasos, as well as from Northern Pieria), unfortunately still scarcely represented as yet by only one of our samples bearing on the neck a cross-mark recalling Garlan’s “à la roue” stamp, tentatively connected with Akanthos (Fig. 10).

Thus, in the light of these preliminary lab results, the development, alongside the two main South-Ionian initiators of numerous secondary workshops imitating the originals appears confirmed. This hypothesis, first suggested by the former case of the finds from the Tektaş Burnu shipwreck¹, bearing the stamp EPY and attributed to Erythrae, appears supported by the chemical pattern of my own (unstamped) sample CRI 3 from Chersonesus (Fig. 6). Today, an additional related find from the Menekşe Çatağı settlement (NW Propontis) can be added, bearing the stamp ΣΤΟΛ², for which one might hesitate between two distinct places of manufacture: either the abbreviated city name of Chalcidian ΣΤΩΛΟΣ (CTOΛΙΟΙ in the ATL for 454–434 BC) or that of a local hero of Nicomedia (NE Propontis, i.e. closer to the Menekşe Çatağı find), whose name was found only on a local coin from Nicomedia, struck with the inscription CΤΩΛΟC³.

Obviously, investigations into these assumed more or less remote imitations of a standard model must be expanded in order to obtain more coherent chemical clusters, able to provide more secure geographical attributions. Incidentally, the presence among the finds from Miletus itself, alongside mostly locally made “Milesian” type jars, of some imported specimens of quite similar type but of foreign manufacture – such as those exhibiting a Hellenistic chemical pattern (Fig. 9) – cannot be excluded either.

May these few lines at least highlight the flimsiness of geographical jar names, even when they are based on lab results, which simultaneously involve both major centres of manufacture and disparate more or less distant imitators. In the present case, it appears that, in addition to the prevailing amphorical tandem Miletus-Samos, several other more or less distant plagiarists were also involved, although represented only marginally within our range of samples. For these, the attributions of origin were given on preliminary information only. In each case, specific inquiries would have to be carried out thoroughly on a larger scale. It goes without saying that similar situations are to be expected for most other types of East-Greek transport amphoras too, dated as early as the Archaic period.

¹ Carlson 2003, p. 588, figs. 7–8.

² Stoyanov 2018, p. 310, fig. 7.1.

³ Hill 1964, p. 188. See also Wroth 1963, p. 181, nr. 15 (Nicomedia), Pontus pl. XXXIV/5; Zahrnt 1971, p. 244–246. See also *Brit. Mus. Cat. of Greek coins. Pontus*, Bologna, 1963, p. 181, pl. 34 nr. 5.



Figure 7. Classical transport amphora of "Milesian" type: North-Ionian manufacture (Erythrae?).



Figure 8. Classical transport amphora of "Milesian" type: Chian manufacture?



Figure 9. Classical transport amphora of “Milesian” type: Hellespontic manufacture?



Figure 10. Classical transport amphora of “Milesian” type: North-Aegean manufacture?

REFERENCES

- Carlson 2003 – D. N. Carlson, *The Classical Shipwreck at Tektaş Burnu, Turkey*, *AJA* 107, 2003, p. 581–600.
- Hill 1964 – G. F. Hill, *Ancient Greek and Roman Coins. A Handbook*, Chicago 1964.
- Stoyanov 2018 – R. V. Stoyanov, *Transport amphorae from the destruction layer at the Menekşe Çatağı settlement in the Propontis*, in: R. G. Gürtekin Demir, H. Cevizoğlu, Y. Polat, G. Polat (eds.), *Archaic and Classical Western Anatolia. New Perspectives in Ceramic Studies*, *Colloquia Antiqua* 19, Leuven, 2018, p. 303–314.
- Wroth 1963 – W. Wroth, *Catalogue of Greek Coins. Pontus, Paphlagonia, Bithynia and the Kingdom of Bosphorus*, Bologna, 1963.
- Zahrnt 1971 – M. Zahrnt, *Olynth und die Chalkidier*, München, 1971.

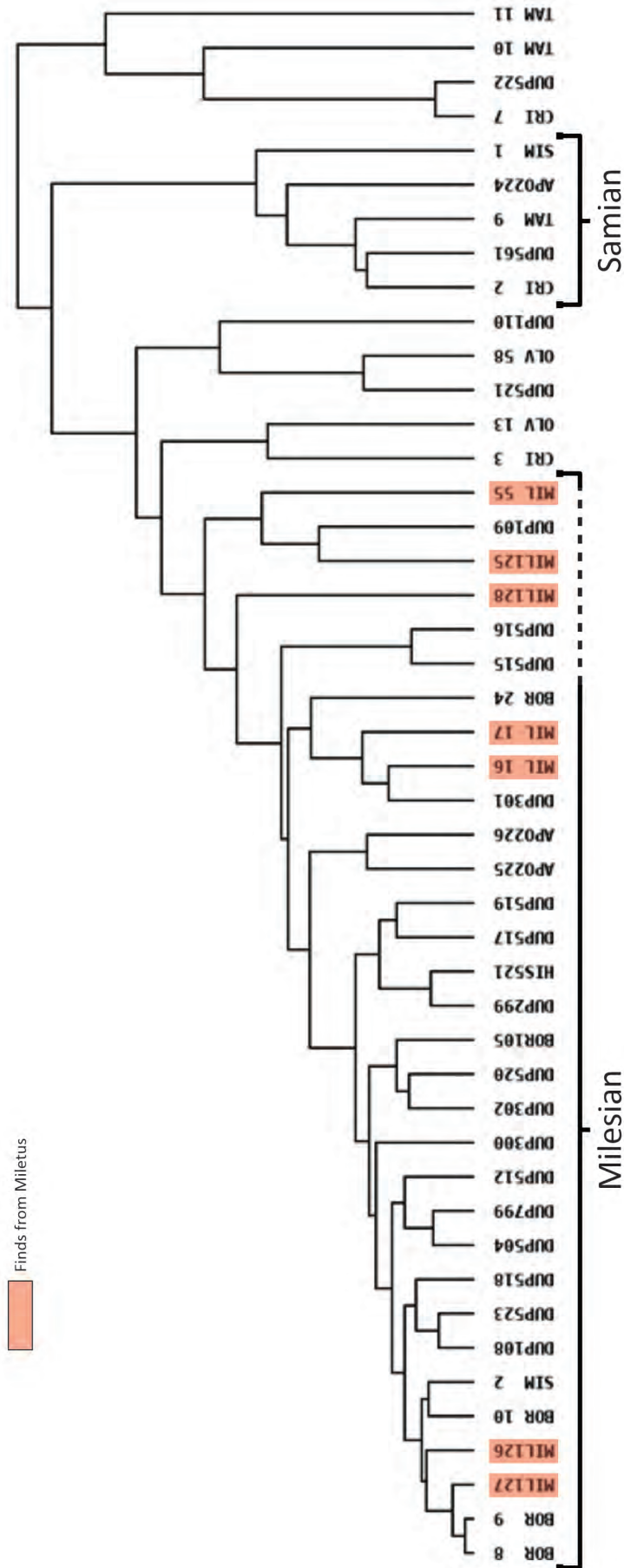


Plate 1. Dendrogram of classification of chemical data of transport amphorae of "Milesian" type.
-Acronyms of dendrogram samples: APO (Apollonia Pontica); BOR (Berezan); CRI (Tauric Chersonesus); DUP+HIS (Isthros); MIL (Miletus); OLV (Olbia); SIM (Simagre/Colchis); TAM (Phanagoria)

ABREVIERI / ABRÉVIATIONS / ABBREVIATIONS

- AA – Archäologischer Anzeiger. Deutsches Archäologisches Institut, Darmstadt, München, Tübingen–Berlin
(A)ARMSI – Analele Academiei Române. Memoriile Secțiunii Istorice, București
ACD – Acta Classica Universitatis Scientiarum Debrecenensis, Debrecen
ActaArchHung – Acta Archaeologica Academiae Scientiarum Hungaricae, Budapest
ActaHistArt – Acta historiae artium Academiae scientiarum Hungaricae, Akadémiai Kiadó, Budapesta
ActaMN – Acta Musei Napocensis, Cluj-Napoca
ActaMP – Acta Musei Porolissensis, Zalău
AÉ – L'Année épigraphique, Paris.
AIIA Iași – Anuarul Institutului de Istorie și Arheologie „A. D. Xenopol”, Iași
AIIC – Anuarul Institutului de Istorie „George Barițiu”, Cluj
AJBA – American Journal of Biological Anthropology
AJPA – American Journal of Physical Anthropology
AK – Archaeologiai Közlemények, Pest
AnSt – Anatolian Studies, British Institute of Ankara
AnUCDC – Analele Universității Creștine „Dimitrie Cantemir”
AnUVT – Annales d'Université « Valahia » Târgoviște, Section d'Archéologie et d'Histoire
AO – Arhivele Olteniei, Craiova
ArchBulg – Archaeologia Bulgarica, Sofia
ArchÉrt – Archaeológiai Értesítő, Budapest
Argesis – Argesis. Muzeul Județean Argeș. Pitești
ArhMed – Arheologia Medievală
ArhMold – Arheologia Moldovei, Iași
AȘUI – Analele Științifice ale Universității „Alexandru Ioan Cuza”, Iași
Az Érem – Az Érem kiadványai, Budapest
Banatica – Banatica. Muzeul Banatului Montan, Reșița
BARBrSer – British Archaeological Reports. British Series, Oxford
BARIntSer – British Archaeological Reports. International Series, Oxford
BCMI – Buletinul Comisiunii Monumentelor Istorice
BerRGK – Bericht der Romisch-Germanische Kommission des Deutschen Archäologischen Instituts, Frankfurt am Main
BibIstroPontica-P – Biblioteca Istro-Pontica. Seria Patrimoniu, Tulcea
BJ – Bonner Jahrbücher – Bonner Jahrbücher des Rheinischen Landesmuseums in Bonn, Bonn
BMC – *Coins of the Roman Empire in the British Museum*, Londra: I, *Augustus to Vitellius*, 1923; II, *Vespasian to Domitian*, 1930; III, *Nerva to Hadrian*, 1936; IV, *Antoninus Pius to Commodus*, 1968; V, *Pertinax to Elagabalus*, 1950 (H. Mattingly); VI, *Severus Alexander to Balbinus and Pupienus*, 1962 (R.A.G. Carson).
BMI – Buletinul Monumentelor Istorice, București
BMJT – Buletinul Muzeului Județean Teleorman, Alexandria
BSNR – Buletinul Societății Numismatice Române, București
Buridava – Buridava. Studii și materiale, Muzeul Județean „Aurelian Sacerdoțeanu”, Râmnicu Vâlcea
CA – Cercetări Arheologice. Muzeul Național de Istorie a României, București
Caiete ARA – Caiete ARA. Asociația Arhitectură, restaurare, arheologie, București
Carpica – Carpica. Complexul Muzeal „Iulian Antonescu” Bacău
CCA – Cronica Cercetărilor Arheologice din România
CEpR – Cronica Epigrafică a României
Cerclst – Cercetări Istorice, Iași
CICSA – Centrul de Istorie Comparată a Societăților Antice, Facultatea de Istorie, Universitatea din București
CIL – *Corpus Inscriptionum Latinarum*, I–XVII, Berlin
CN – Cercetări Numismatice. Muzeul Național de Istorie a României, București
CNM, V.1 – *Corpus Nummorum Moldaviae*, vol. V.1, Chișinău
CRAI – Académie des inscriptions et belles-lettres. Comptes rendus des séances de l'année ...
Crisia – Crisia. Muzeul Țării Crișurilor, Oradea

- Dacia – Dacia / Dacia Nouvelle Série. Revue d'archéologie et d'histoire ancienne. Académie Roumaine. Institut d'archéologie « V. Pârvan », Bucarest
- Danubius – Danubius. Revista Muzeului de Istorie Galați
- DHA – Dialogues d'histoire ancienne, Institut des Sciences et Techniques de l'Antiquité
- Documenta Praehistorica – Documenta Praehistorica, University of Ljubljana, Faculty of Arts, Department of Archaeology, Ljubljana
- EphemDac – Ephemeris Dacoromana, Roma
- EphemNap – Ephemeris Napocensis, Cluj-Napoca
- ERSIR – *Enciclopedia reprezentanților scrisului istoric românesc*, I – V, V. Spinei, D. N. Rusu (coord.), Suceava, 2021
- FolArch – Folia Archaeologica. A Magyar Nemzeti Múzeum Évkönyve. Annales Musei Nationalis Hungarici, Budapest
- Fontes I – *Fontes Historiae Daco-Romanae – Izvoarele istoriei României*, I, București, 1964
- Fontes II – *Fontes Historiae Daco-Romanae – Izvoarele istoriei României*, II, București, 1970
- FSI – Forensic Science International
- Glasnik – Glasnik. Srpsko Arheološko Društvo (Journal of the Serbian Archaeological Society), Belgrad
- Hierasus – Hierasus. Muzeul Județean Buzău
- HOMO – HOMO. Journal of Comparative Human Biology, Stuttgart
- Ialomița – Ialomița. Studii de cercetări de arheologie, istorie, etnografie și muzeologie, Slobozia
- IDRE – C. C. Petolescu, *Inscriptiones Daciae Romanae. Inscriptiones externae – Inscriptions externes concernant l'histoire de la Dacie*, I-II, București, 1996-2000
- IGB – G. Mihailov, *Inscriptiones graecae in Bulgaria repertae*, vol. I-V, Sofia, 1956-1970
- IGLR – E. Popescu, *Inscripțiile grecești și latine din secolele IV–XIII descoperite în România*, București, 1976
- IGRR – *Inscriptiones Graecae ad Res Romanas pertinentes*, publiées par R. Cagnat, J. Toutain, G. Lafaye, Paris, 1906-1927
- IJP – International Journal of Paleopathology
- ISM – *Inscriptiones Daciae et Scythiae Minoris antiquae. Series altera: Inscriptiones Scythiae Minoris Graecae et Latinae – Inscriptiile din Sythia Minor*: I. *Inscriptiones Histriae et vicinia – Histria și împrejurimile* (Dionisie M. Pippidi), București, 1983; II. *Tomis et territorium – Tomis și teritoriul său* (Iorgu Stoian), București, 1987; III. *Callatis et territorium – Callatis et son territoire* (Alexandru Avram), București – Paris, 1999; IV. *Tropaeum – Durostorum – Axiopolis* (Emilian Popescu), București – Paris, 2015 ; V. *Capidava – Troesmis – Noviodunum* (Emilia Doruțiu-Boilă), București, 1980; VI.2. *Supplementa 2. Tomis et territorium – Tomis et son territoire* (Alexandru Avram, Maria Bărbulescu, Livia Buzoianu), București – Paris, 2018
- Istros – Istros. Muzeul Brăilei „Ferdinand I”, Brăila
- IzvestijaVarna – Izvestija na Narodnija Muzej (Izvestija na Varnenskoto Arheologičesko Družestvo), Varna
- JAHA – Journal of Ancient History and Archaeology, Cluj-Napoca
- JAS – Journal of Archaeological Science, Amsterdam
- JAT – Journal of Ancient Topography
- JFS – Journal of Forensic Studies
- JITE – Journal of Institutional and Theoretical Economics
- JHE – Journal of Human Evolution
- LRBC – *Late Roman Bronze Coinage A.D. 394-498*, Londra, 1965: I, *The Bronze Coinage of the House of Constantine A.D. 324–346* (P. V. Hill, J. P. C. Kent); II, *Bronze Roman Imperial Coinage of the Later Empire A.D. 346–498* (R. A. G. Carson, J. P. C. Kent).
- MarNero – Il Mar Nero. Annali di archeologia e storia, Roma
- MemAnt – Memoria Antiquitatis, Piatra Neamț
- Marmatia – Marmatia. Muzeul Județean de Istorie și Arheologie Maramureș, Baia Mare
- MCA – Materiale și Cercetări Arheologice, București
- MCSEE – Monedă și comerț în Sud-Estul Europei, Sibiu
- MEFRM – Mélanges de l'École française de Rome. Moyen Âge, Rome
- MER – *Catalogue des monnaies de l'Empire romain*. II. J.-B. Giard, *De Tibère à Néron*, Paris, 1988 ; III. J.-B. Giard, *Du soulèvement de 68 après J.-C. à Nerva*, Paris-Strasbourg, 1998
- MFMÉ-SA – A Móra Ferenc Múzeum Évkönyve – Studia Archaeologica, Szeged
- MIR – *Moneta Imperii Romani*. 14. B. Woytek, *Die Reichsprägung des Kaisers Traianus (98–117)*, I–II, Wien, 2010; 18. W. Szaivert, *Die Münzprägung der Kaiser Marcus Aurelius, Lucius Verus und Commodus (161–192)*, Wien, 1986.
- Mousaios – Mousaios. Buletinul Științific al Muzeului Județean Buzău
- MuzNaț – Muzeul Național, Muzeul Național de Istorie a României, București
- Numizmatičar – Numizmatičar. Casopis za anticki i stari jugoslovenski novac, Belgrad

- Numizmatikai Közlöny – Numizmatikai Közlöny. A Magyar Numizmatikai Társulat, Akadémiai Klado, Budapest
- NZ – Numismatische Zeitschrift, Viena
- Oltenia – Oltenia. Studii și Comunicări, Craiova
- Paléorient – Paléorient: revue interdisciplinaire de préhistoire et de protohistoire du sud-ouest et de l'Asie centrale, Paris
- PBF – Prähistorische Bronze Funde, München – Stuttgart
- Peuce – Peuce. Studii și cercetări de istorie și arheologie, Institutul de Cercetări Eco-Muzeale „Gavrilă Simion”, Tulcea
- PME – H. Devijver, *Prosopographia militiarum equestrium quae fuerunt ab Augusto ad Gallienum*, Leuven, I (A–I, 1976), II (I–V, 1977), III (1980; indici)
- Pontica – Pontica. Studii și materiale de istorie, arheologie și muzeografie, Muzeul de Istorie Națională și Arheologie, Constanța
- Przegląd Archaeologiczny – Przegląd Archaeologiczny, Institut Archeologii i Etnologii Polskiej Akademii Nauk, Wrocław
- PZ – Prähistorische Zeitschrift, Institut für Prähistorische Archäologie, Berlin
- RAASI – Revista de Arheologie, Antropologie și Studii Interdisciplinare, Institutul de Cercetări Bioarheologice și Etnoculturale, Republica Moldova
- RAN – Repertoriul Arheologic Național / National Archaeological Repository
- RCAN – Revista de Cercetări Arheologice și Numismatice, București
- RESEE – Revue des Études Sud-Est Européennes. Academia Română. Institutul de Studii Sud-Est Europeene, București
- RevArh – Revista Arheologică, Chișinău
- RGZM – Barbara Pferdehirt, *Römische Militärdiplome und Entlassungsurkunden in der Sammlung des Römisch-Germanischen Zentralmuseums*, Mainz, I-II, 2004
- RI – Revista Istorică. Institutul de Istorie „Nicolae Iorga”, București
- RIC – *The Roman Imperial Coinage*, Londra: I², *From 31 BC to AD 69*, 1984 (C. H. V. Sutherland); II, *Vespasian to Hadrian*, 1926 (H. Mattingly, E.A. Sydenham); II.1, *From AD 69–96. Vespasian to Domitian*, 2007 (I. A. Carradice, T.V. Buttrey); II.3, *From AD 117–138. Hadrian*, 2019 (R.A. Abdy, P.F. Mittag); III, *Antoninus Pius to Commodus*, 1930; IV.1, *Pertinax to Geta*, 1968 (H. Mattingly, E.A. Sydenham); IV.2, *Macrinus to Pupienus*, 1938; IV.3, *Gordian III – Uranian Antoninus*, 1949 (H. Mattingly, E. A. Sydenham, C. H. V. Sutherland); V.1, 1927 (reimprimat 1968; P. H. Webb); VII, *Constantine and Licinius A.D. 313–337*, 1966 (P.M. Bruun); VIII, *The Family of Constantine I A.D. 337–364*, 1981; X, *The Divided Empire and the Fall of the Western Parts A.D. 395–491*, 1994 (J.P.C. Kent)
- RMD – Margaret M. Roxan, *Roman Military Diplomas*, London: I. *Roman Military Diplomas 1954–1977*, 1978; II. *Roman Military Diplomas 1978–1984*, 1985; III. *Roman Military Diplomas 1985–1993*, 1994; Margaret M. Roxan, P. Holder, *Roman Military Diplomas IV*, 2003; P. Holder, *Roman Military Diplomas V*, 2006
- RMM-MIA – Revista Muzeelor și Monumentelor – Monumente Istorice și de Artă, București
- Romanoslavica – Romanoslavica. Asociația Slaviștilor din România, București
- RPC – *Roman Provincial Coinage*, Oxford (https://rpc.ashmus.ox.ac.uk/search/map?volume_id=)
- RPC, VII.2 – *Roman Provincial Coinage. VII.2. From Gordian I to Gordian III (AD 238–244): all provinces except Asia*, Londra/Paris, 2022 (J. Mairat, M. Spoerri Butcher, cu contribuția M. Amandry, R. Bland, K. Butcher, J. Nurpetlian, U. Peter).
- RRH – Revue Roumaine d'Histoire, Bucarest
- SAA – Studia Antiqua et Archaeologica, Iași
- SCIA.AP – Studii și Cercetări de Istoria Artei. Seria Artă Plastică
- SCIV(A) – Studii și Cercetări de Istorie Veche (și Arheologie), București
- SCN – Studii și Cercetări de Numismatică, București
- SHA – *Scriptores Historiae Augustae*, Teubner, Leipzig, 1965
- Simpozion Chișinău 2003 – *Simpozion de numismatică dedicat Centenarului Societății Numismatice Române (1903–2003)*, Chișinău, 26–28 noiembrie 2003, București, 2005.
- SMIM – Studii și Materiale de Istorie Medie. Institutul de Istorie „Nicolae Iorga”, București
- SMMIM – Studii și Materiale de Muzeografie și Istorie Militară, București
- SNGCop 2 – *Sylloge Nummorum Graecorum. The Royal Collection of Coins and Medals, Danish Royal National Museum*, Copenhaga, 1942–1969 (serie reeditată); II, *Thrace and Macedonia*, West Milford, 1982.
- SP – Studii de Preistorie, București
- StCl – Studii Clasice, București
- StratumPlus – Stratum Plus, Școala Superioară de Antropologie, Chișinău, St Petersburg, București
- Suceava – Suceava. Anuarul Muzeului Național al Bucovinei, Suceava
- SympThrac – Symposia Thracologica, București
- Syria – Syria. Archéologie, art et histoire. Institut Français du Proche-Orient
- TdE – Trabajos de Egiptología. Papers on Ancient Egypt, Universidad de La Laguna, Tenerife, Spania

Th-D – Thraco-Dacica, București

Tyragetia – Tyragetia. Anuarul Muzeului Național de Istorie a Moldovei, Chișinău

VAH – Varia Archaeologica Hungarica V. Redigit Csanád Bálint. Publicationes Instituti Archaeologici Academiae Scientiarum Hungaricae, Budapest

Valachica – Valachica. Studii și cercetări de istorie și istoria culturii, Complexul Muzeal Național „Curtea Domnească”, Târgoviște

ZPE – Zeitschrift für Papyrologie und Epigraphik, Bonn

ZRVI – Zbornik radova Vizantološkog instituta. The Institute for Byzantine Studies. Serbian Academy of Sciences and Arts, Belgrad